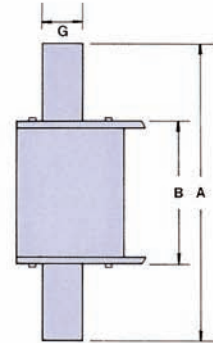
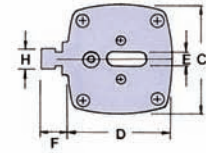
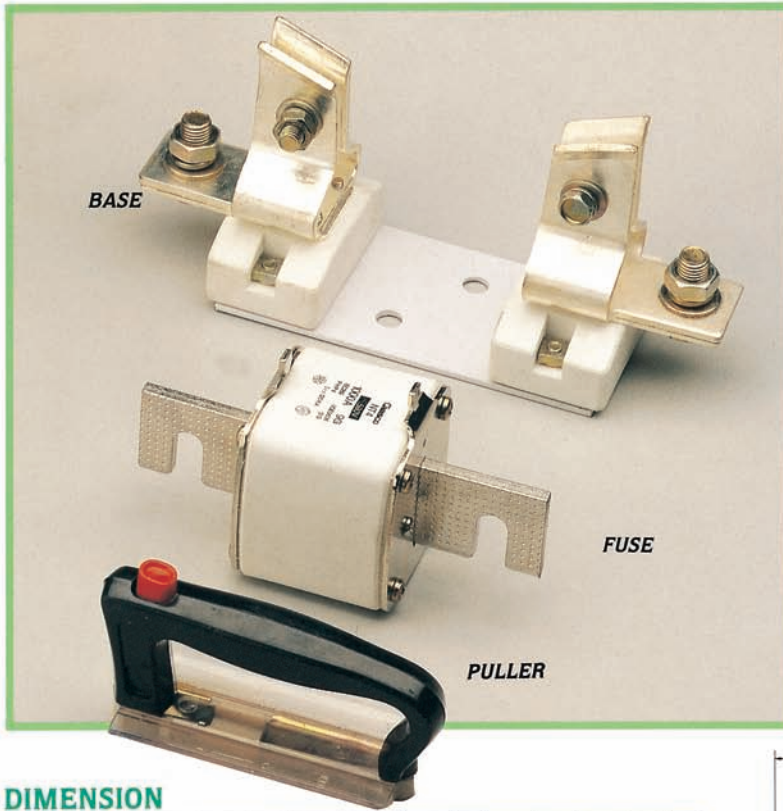
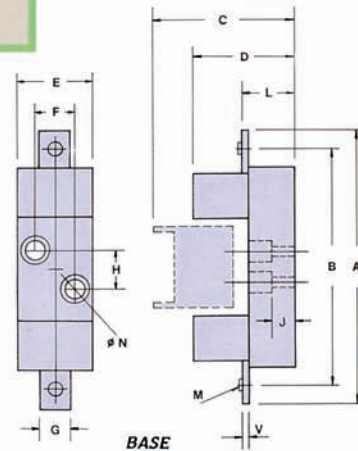




## SQUARE PIPE TYPE FUSE & BASE



FUSE



BASE

### DIMENSION

ITEM NO.	mm												
	A	B	C	D	E	F	G	H	L	M	ØN	V	J
NT00	78.5	49	30	43	6	16	15.5	10	X	X	X	X	X
NT1	13.5	66	46	46	6	14	20.5	10	X	X	X	X	X
NT2	150	67	59	59	6	15	26.5	10	X	X	X	X	X
NT3	150	68	70	70	6	15	26.5	10	X	X	X	X	X
NT4	198	81	100	100	6	15	50	10	X	X	X	X	X
B-0	120	100	85	60	30	0	25	25	25	8	7.5	2.5	8
B-1	200	175	96	82	58	30	25	25	38	10	10.5	3	15
B-2	225	200	112	98	64	30	30	25	40	10	10.5	5	17
B-3	250	210	120	105	64	30	40	25	40.5	12	10.5	5.5	17
B-4	304	260	174	145	96	45	45	30	47.5	16	13	8.5	4

### SPECIFICATION

ITEM NO.	FUSE					BASE					PULLER
	NT00	NT1	NT2	NT3	NT4	B-0	B-1	B-2	B-3	B-4	FH-1
RATED VOLTAGE (V)	500 V	500 V	500 V	500 V	500 V	660 V	660 V	660 V	660 V	660 V	1000V
RATED CURRENT (A)	6, 10, 16 20, 25, 32 36, 40, 50 63, 80 100, 125 160	36,40,50 63, 80 100, 125 160,200 224, 250	80, 100 125, 160 200, 224 250, 300 315, 355 400	315, 355 400, 425 500, 630	500, 630 800, 1000 1250	160	250	400	630	1000	---
CONNECTED WITH BASE (FUSE)	B-0	B-1	B-2	B-3	B-4	NT00	NT1	NT2	NT3	NT4	NT00 TO NT 4